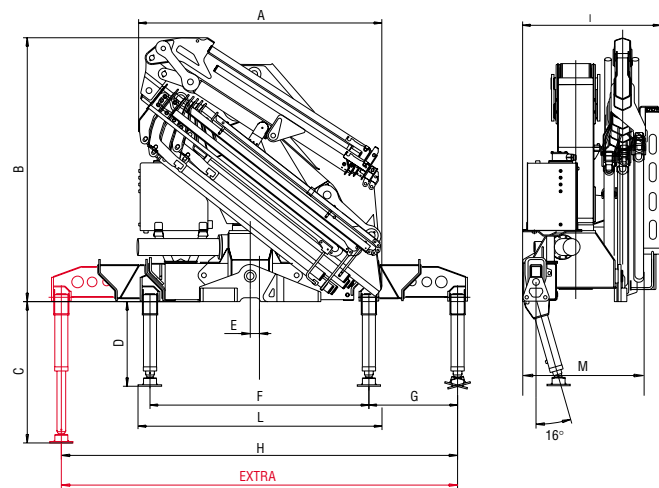


**DATI TECNICI TECHNICAL DATA**

946	2S	3S	4S	5S	6S	7S	8S	6S/4S
A	2128	2210	2315	2372	2455	2464	2509	2515
B	2460	2460	2460	2460	2460	2460	2480	2725
C	1462	1462	1462	1462	1462	1462	1462	1462
D	875	875	875	875	875	875	875	875
E	95	95	95	95	95	95	95	95
F	2263	2263	2263	2263	2263	2263	2263	2263
G	1393.5	1393.5	1393.5	1393.5	1393.5	1393.5	1393.5	1393.5
H	5050	5050	5050	5050	5050	5050	5050	5050
I	1470	-	1470	-	1470	-	-	1470
L	2503	2503	2503	2503	2503	2503	2503	2503
M	1275	1275	1275	1285	1285	1400	1400	-
EXTRA	7400	7400	7400	7400	7400	7400	7400	7400



MOMENTO DI SOLLEVAMENTO  
MAX. LIFTING MOMENT  
MOMENT D'ELEVATION MAX.  
MAX. AUFHEBEMOMENT  
MOMENTOS DE ELEVACION  
MOMENTO DE ELEVACAO MAX.  
(t.m.)

946
43.2

SBRACCIO MAX. VERTICALE  
MAX VERTICAL REACH  
LONGEUR DU BRAS VERTICALE  
MAX VERTIKAL REICHWEITE  
ALCANGE MAX. VERTICAL  
ALCANGE MAX. VERTICAL  
(m.)

946	2s	3s	4s	5s	6s	7s	8s
hyd.	12.1	14.1	16.1	18.2	20.3	22.5	24.7
man.	-	20.3	22.4	24.7	27.0	27.0	27.0
J.4s hyd.	-	-	-	30.1	-	-	-

ANGOLO DI ROTAZIONE  
SLEWING ANGLE  
ANGLE ROTATION  
DREHWINKEL  
ANGULO DE ROTACION  
ANGULO DE ROTACAO  
(°)

946
410

VELOCITÀ DI ROTAZIONE  
SLEWING SPEED  
VITESSE DE ROTATION  
DREHGESCHWINDIGKEIT  
VELOCIDAD DE ROTACION  
VELOCIDADE DE RUTACAO  
(180°)

946
92s

PENDENZA MAX. DI LAVORO  
MAX WORKING HEEL  
DEVERS MAXI DE TRAVAIL  
MAX. ARBEITSNEIGUNG  
INCLINACIÓN MÁX. DE TRABAJO  
PENDÊNCIA MÁX. DE TRABALHO  
(°)

946
4

PRESSIONE D'ESERCIZIO  
WORKING PRESSURE  
PRESSION DE SERVICE  
BETRIEBSDRUCK  
PRESSION DE TRABAJO  
PRESSAO DE TRABALHO  
(bar)

946
305

PESO GRU SENZA STABILIZZATORI  
CRANE WEIGHT WITHOUT STABILIZER  
MASSE GRUE SANS STABILISATEURS  
KRANGEWICHT OHNE ABSTÜTZUNGEN  
PESO DE LA GRUA SIN GATOS  
PESO DA GRUA SEM ESTABILIZADORE  
(kg.)

946	2s	3s	4s	5s	6s	7s	8s
base	4020	4270	4520	4740	4930	5120	5290
Jib4s	-	-	-	5790	-	-	-

PESO STAB. STANDARD  
WEIGHT OF STABILIZERS  
POIDS DES STABILISATEURS  
GEWICHT DER ABSTÜTZUNGEN  
PESO GATOS EXTENSIBLES  
PESO DOS ESTABILIZADORES  
(kg.)

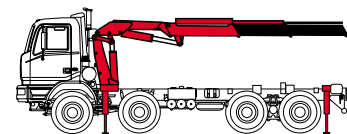
946
500

CAPACITÀ SERBATOIO OLIO  
OIL TANK CAPACITY  
CONTENANCE RÉSERVOIR HUILE  
ÖLBEHÄLTERHINHALT  
CAPACIDAD DEL DEPÓSITO ACEITE  
CAPACIDADE DO DEPOSITO DE OLEO  
(l.)

946
210

PORTATA AL DISTRIBUTORE  
OIL HYDRAULIC DISCHARGE TO THE DISTRIBUTOR BOX  
DÉBIT D'UILE HYDRAULIQUE AU DISTRIBUTEUR  
HYDRAULISCHE ÖL TRAGFÄHIGKEIT ZUM STEUERUNG  
CAUDAL AL DISTRIBUIDOR  
DESCARGA DE OLEO HIDRAULICO AO DISTRIBUIDOR  
(l/min.)

946
80



Autocarro consigliato  
Recommended truck  
Camion conseillé  
Camion aconselhado  
Camiao aconselhado  
Passo - Wheelbase - Empattement - Passo: 4000 mm. M.T.T. ton 24  
G.V.W. ton 24

ACCESSORI	ACCESSORIES	ACCESSOIRES	ZUBEHOERE	ACCESORIOS	ACCESORIOS
- Attivazione elementi supplementari* - Verricello** - Stab. extra estendibili (+260 Kg)	- Supplementary element activation* - Winch** - Extra extensible sliding stab. (+260 Kg)	- Activation éléments supplémentaires* - Treuil** - Stab. coulissants extra-extensibles (+260 Kg)	- Steuerelemente einföhrung* - Wansch** - Lauf-Stabilisatoren Extraauszug (+260 Kg)	- Activación elementos suplementarios* - Cabrestante** - Estab. corrediços extra extensivos (+260 Kg)	- Activacao de elementos suplementares* - Guincho** - Estab. corrediços extra extensivos (+260 Kg)

\*) No 3S - 5S - 7S - 8S    \*\*) 2.6t Mod.: 6S - 7S - 8S • 3.6t Mod.: 2S - 3S - 4S - 5S

Dati, descrizioni e illustrazioni sono indicativi e non impegnano Amco Veba. Gru prodotte e/o commercializzate da Amco Veba - Data, descriptions and illustrations are merely indicative and not binding. Cranes manufactured and marketed by Amco Veba - Les données, descriptions et illustrations sont uniquement indicatives et n'engagent pas Amco Veba. Grues produites et/ou vendues par Amco Veba - Angaben, Beschreibungen und Abbildungen sind weisend und verpflichten nicht Amco Veba. Die Kräne werden von Amco Veba hergestellt und/oder vermarktet - Los datos, las descripciones y las ilustraciones son indicativos y no implican compromiso para Amco Veba. Gruas producidas y/o comercializadas por Amco Veba - Os dados as descrições e ilustrações são indicativos e não comprometem Amco Veba. Guindaste produzidos e/ou comercializados pela Amco Veba.



Amco Veba s.r.l.  
Via Einstein, 4  
42028 Poggio (RE) Italy  
Tel. +39 0522 40.80.11  
Fax +39 0522 40.80.80  
E-mail: commerciale@amcoveba.it  
www.amcoveba.com

COMPANY  
WITH QUALITY SYSTEM  
CERTIFIED BY DNV  
=ISO 9001/2000=



RADIO REMOTE STANDARD

946





- Comando a distanza
- Danfoss PVG32
- Lubrificazione centralizzata
- Limitatore di momento
- Sfili esagonali
- Mart. sfilo indipendenti
- Stabilizzatori snodati
- Stabilizzatori allargabili idraulicamente
- Valvole flangiate
- Serbatoio olio
- Kit di montaggio
- Norma di progettazione: EN12999
- Classe di collaudo a fatica: B3
- Sprint Generation System (SGS)
- Electronic Black Box (EBB)
- Soft Descend Drive (SDD)



- Remote control
- Danfoss PVG32
- One-shot lubrication
- Load limiting device
- Hexagonal section extension
- Independent extension cylinders
- Swiveling stabilizers
- Outriggers with hydraulic extension
- Flanged valves
- Oil tank
- Assembly kit
- Design in accordance with EN12999
- Fatigue test classification: B3
- Sprint Generation System (SGS)
- Electronic Black Box (EBB)
- Soft Descend Drive (SDD)



- Commande à distance
- Danfoss PVG32
- Lubrification centrale
- Limiteur de moment
- Extensions hydrauliques à section hexagonale
- Vérins hydrauliques à sortie indépendante
- Béquilles désarticulées
- Béquilles avec ouverture hydraulique
- Vannes bridées
- Réservoir pour huile
- Kit de brides de fixation
- Projée e en accords aux normes: EN12999
- Essai de fatigue avec classification: B3
- Sprint Generation System (SGS)
- Electronic Black Box (EBB)
- Soft Descend Drive (SDD)



- Fernsteuerung
- Danfoss PVG32
- Zentralschmierng
- Momentbegrenzer
- Sechskantige Auszüge
- Unabhängige Auszugzylinder
- Gelenk Abstützungen
- Seitlich hydraulisch ausfahrable Abstützungbeine
- Ventile mit Flansch
- Ölbehälter
- Montagesatz
- Berechnungsnorm nach EN12999
- Ermüdungstest in Klasse: B3
- Sprint Generation System (SGS)
- Electronic Black Box (EBB)
- Soft Descend Drive (SDD)



- Mando a distancia
- Danfoss PVG32
- Lubricación central
- Limitador de momento
- Brazos telescópicos hexagonales
- Cilindros de extensión independientes
- Gatos articulados
- Estabilizadores extraíbles hidráulicamente
- Valvulas pilotadas
- Deposito aceite
- Kit de ensamble
- Norma del proyecto: EN12999
- Tipo de ensayo a la fatiga: B3
- Sprint Generation System (SGS)
- Electronic Black Box (EBB)
- Soft Descend Drive (SDD)



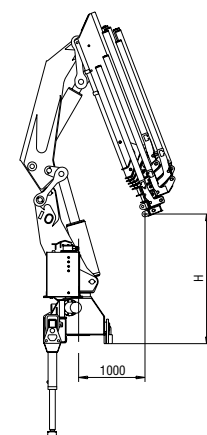
- Comando a distancia
- Danfoss PVG32
- Lubrificação central
- Limitador de momento
- Extensoes hesagonais
- Cilindros de extensao independentes
- Estabilizadores articulados
- Estabilizador alongadohidráulicamente
- Válvulas de segurança
- Deposito de óleo
- Kit de montagem
- Norma de protecao EN12999
- Typo de Ensayo a la fatiga: B3
- Sprint Generation System (SGS)
- Electronic Black Box (EBB)
- Soft Descend Drive (SDD)



Model	Capacity (Kg)	Length (m)
946/2S	21600*, 10000, 7120, 5450	2.0, 4.32, 6.10, 7.95
946/3S	21180*, 9560, 6800, 5180, 4140, 3220, 2530, 2015	2.0, 4.43, 6.20, 8.05, 10.0, 12.0, 14.10, 16.20
946/4S	20890*, 9180, 6500, 4900, 3880, 3220, 2530, 2015, 1590	2.0, 4.55, 6.30, 8.15, 10.10, 12.0, 14.10, 16.20, 18.40
946/5S	20700*, 9000, 6300, 4680, 3650, 2990, 2530, 2015, 1590, 1250	2.0, 4.55, 6.30, 8.15, 10.10, 12.0, 14.10, 16.20, 18.40, 20.60

Model	Capacity (Kg)	Length (m)
946/6S	20030*, 8700, 6050, 4470, 3450, 2800, 2330, 2015, 1590, 1250, 1020	2.0, 4.60, 6.35, 8.20, 10.10, 12.10, 14.10, 16.20, 18.40, 20.60, 22.80
946/7S	19620*, 8530, 5860, 4280, 3260, 2600, 2140, 1820, 1590, 1250, 1020	2.0, 4.60, 6.35, 8.20, 10.10, 12.10, 14.10, 16.20, 18.40, 20.60, 22.80
946/8S	19280*, 8200, 5620, 4080, 3080, 2420, 1950, 1640, 1410, 1250, 1020	2.0, 4.70, 6.40, 8.30, 10.20, 12.20, 14.20, 16.30, 18.40, 20.60, 22.80
946/6S+Jib 4s		880, 770, 680, 620, 570, 480
		19.0, 20.70, 22.40, 24.20, 26.0, 27.9

(\*) Portata teorica Theoretical lifting capacity



- H 946/2S = 2440
- H 946/3S = 2335
- H 946/4S = 2225
- H 946/5S = 2225
- H 946/6S = 2150
- H 946/7S = 2150
- H 946/8S = 2030

